



GuardlitePro

LIGHT WEIGHT GUARDING

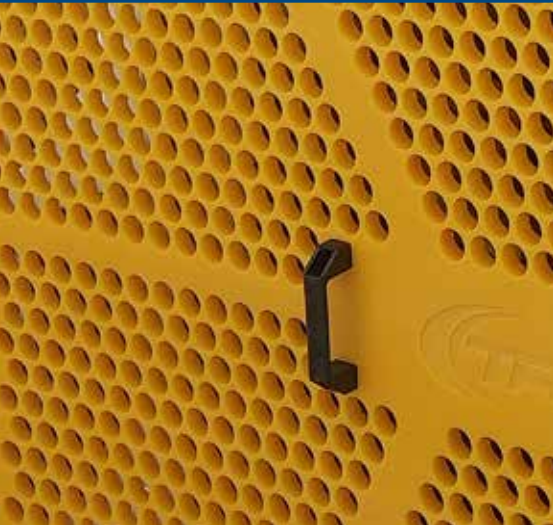
Transmin ConveyorPro is a global supplier of GuardlitePro. A light weight superior grade HDPE guards for variety of conveyors to suit from heavy-duty mining, to mineral processing applications.

GuardlitePro is a new concept in light weight guarding improve personnel safety and prevent worker from hazard areas associated with conveyors. Specifically designed to meet the Australian standard requirements of AS4024.3610, AS4024.3611, AS4024.3612 & AS4024.1.SERIES, focusing on safety by reducing the weight of the guards of up to 45%, simplifying the design, improving the method of securing and handling, reducing overall maintenance, and introducing the ability to recycle.

OPTIONS

- ▶ Guards are available in various sizes and can be used in a variety of combinations to fit almost any application.
- ▶ Custom design to suit any application or can be installed on existing equipment.
- ▶ Can be manufacture in custom colours.
- ▶ 100% Fire proof properties on request.

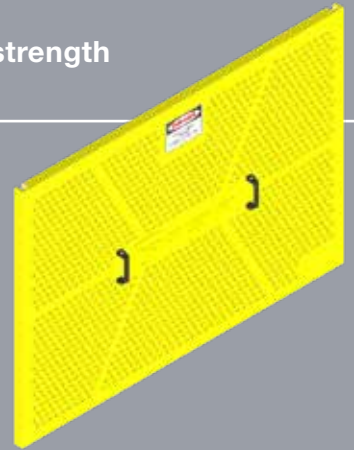
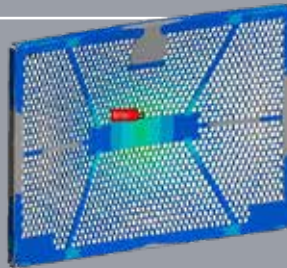
- ✔ Light weight compared with traditional guarding
- ✔ Easy handling, installation and maintenance
- ✔ Rust and corrosion free
- ✔ No routine painting required to maintain the safety yellow color
- ✔ UV resistance - No color fade and crack resistance
- ✔ Chemical resistant
- ✔ Sustainable - 100% recyclable
- ✔ Metal detector friendly



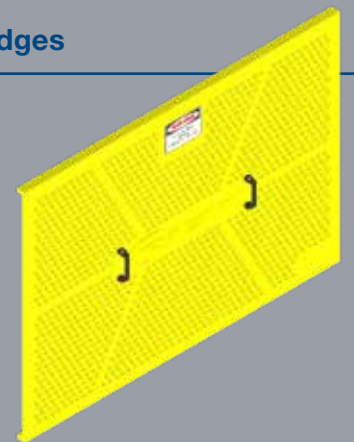
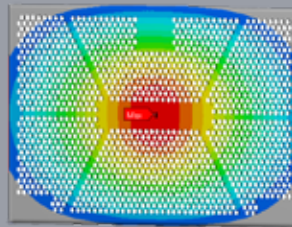
BENEFITS AND FEATURES

- ▶ Worker safety
- ▶ Complying with Australian Standards
- ▶ Aesthetic and ergonomic
- ▶ Easy handling – less tools required for installation/ maintenance
- ▶ Light weight - up to 45% less in comparison with conventional steel mesh guards
- ▶ Stronger design available in the market
- ▶ Rust and corrosion free
- ▶ UV resistance – No colour fade & crack resistance – no routine painting required to maintain safety yellow colour
- ▶ Chemical resistance
- ▶ Can be installed near metal detectors
- ▶ Completely recyclable – 100%
- ▶ Flame/Fire resistance
- ▶ Finite Element Analysis (FEA) and NATA certified destructive testing to meet the compliance of Australian Standards.

GuardlitePro Conveyor Guard: GuardlitePro with 4 edges for better strength and less deflection



Other Conveyor Guard: Ordinary HDPE Guard Design with 2 edges



HEAD OFFICE

Western Australia

Local Call: 1300 127 091

International Call: +61 (0) 8 9270 8555

Email: wasales@transmin.com.au

Address: 33-37 Denninup Way Malaga
Perth, Western Australia, 6090

Queensland & Northern Territory

Local Call: 1300 800 609

International Call: +61 (0) 8 9270 8555

Email: qldsales@transmin.com.au

INTERNATIONAL OFFICES

South America Email: sales.sa@transmin.com.au

North America Email: sales.ca@transmin.com.au

India Email: sales.in@transmin.in

www.transmin.com.au